

MOBILE GRANDSTAND

SYSTEMATIC FLEXIBILITY



QUICK SET-UP

The set-up is simple and built-in tools such as centring corners are a real time-saver.



SUSTAINABLE

The frames are reusable as stages, turntables, stage settings, etc.



MODULAR

Thanks to the modular design, you can easily achieve one row more or less.



WITHOUT TOOLS

No tools are required for quick set-up and dismantling – saves time.



MADE TO MEASURE

Customised adaptations are available in addition to the standard design.



SAFE & CERTIFIED

We manufacture in accordance with DIN EN 1090 1-3 and ISO 3834-2.



SILENT

The force-fit and form-fit joint guarantees silent movement.



MODULAR GRANDSTAND VERSATILE FOR EVERY APPLICATION



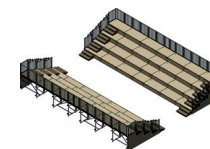
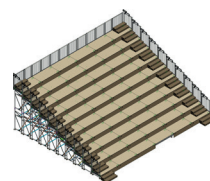
The mobile HOAC® system offers maximum flexibility and can be individually adapted to any given occasion. Thanks to its modular design, the grandstand is quick and easy to set up, dismantle or convert, allowing efficient adaptation to different requirements and offering numerous benefits.

ADVANTAGES:

- > Modular and versatile system
- > Easy attachment of cover panels with patented Twist2Clad
- > Various designs: Straight, round or square possible
- > Spare parts available for many years
- > Damages are easily repairable
- > No screws or drilling required
- > High durability
- > Optionally open spaces under the stand for 'storage areas'

TECHNICAL DATA

- > Standard load: 750 kg/m²
- > Row pitch: 90 mm to 500 mm
- > Railing side load: 150 kg/m
- > Frame material: Aluminum (light)
- > Railing material: Steel
- > Cover plate material: Multiplex 21 mm
- > Different technologies, dimensions (metric, imperial) and loads possible on request



TWO-IN-ONE GRANDSTAND

The same material can be used to build one large or two small grandstands.



VERTICAL FRAMES have been specially developed for grandstands and use special clamps to connect the individual rows together.



RAILINGS They simply click into place and are not complexly screw-fastened.



DIAGONAL AND HORIZONTAL BARS ensure a stable and reliable connection between two vertical frames.

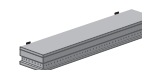
LIFTING ROLLERS offer the option of relocating the fully assembled grandstand.



CHAIR SUPPORT RAILS ensure that a chair is firmly attached to the stand.

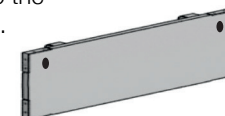


STEP LIGHTING is available with either LED or photoluminescence.

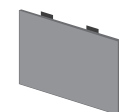


INTERMEDIATE STEPS are used for row heights of 200 mm and above.

FRONT-CLADDING made of wood is attached to the frame with Twist2Clad.



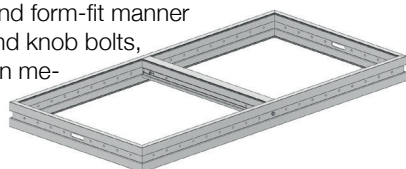
COVER PANELS (locking, edge protection and centering corner) are made of 21 mm multiplex as standard. The edge protection prevents damage and the integrated centering corner facilitates positioning on the frame during assembly.



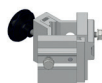
SIDE CLADDING can be optionally added in either wood with Twist2Lock or in fabric.

SYSTEMZARGEN

System frames are available in standard sizes in as well as made to measure. They are connected in a force-fit and form-fit manner with link blocks and knob bolts, ensuring stability in metric and imperial dimensions.



LEG HOLDERS are used to connect the foot or vertical bracings to the frame.



LINK BLOCK connects the frames to each other with a tight and form-fitting bond.



ESPLANADE – THEATRES ON THE BAY

SINGAPORE

With its innovative grandstand construction, the Theatre by the Bay offers maximum versatility. Using the same modular components, a wide variety of set-ups can be achieved: Be it two opposing, angled grandstands, a spacious flat-floor grandstand or an in-the-round version - the options are endless. Any parts of the system that are not required can be stored on special storage trolleys or standard trolleys to maximise space. In combination with our HOAC® Keep-It-Simple philosophy, efficient set-up and dismantling is guaranteed.

