



# MOBILE TURNTABLE

MORE FLEXIBILITY FOR YOUR STAGE





## **SUSTAINABILITY**

Reusable frames for stages, grandstands, stage sets, etc.



## **SILENT**

Noise-less due to a friction-locked connection.



## **LOAD**

Static 500 kg/m<sup>2</sup> and dynamic 250 kg/m<sup>2</sup>. More is possible on request.



## **QUICK SET-UP**

Assembly can be carried out quickly and easily without tools.



## **SPEED**

Various rotation speeds are possible depending on the drive.



## **CUSTOMISABLE DESIGN**

Multiple rings in varying directions of rotation are possible.





## MOBILE TURNTABLE FOR EVERY SCENARIO

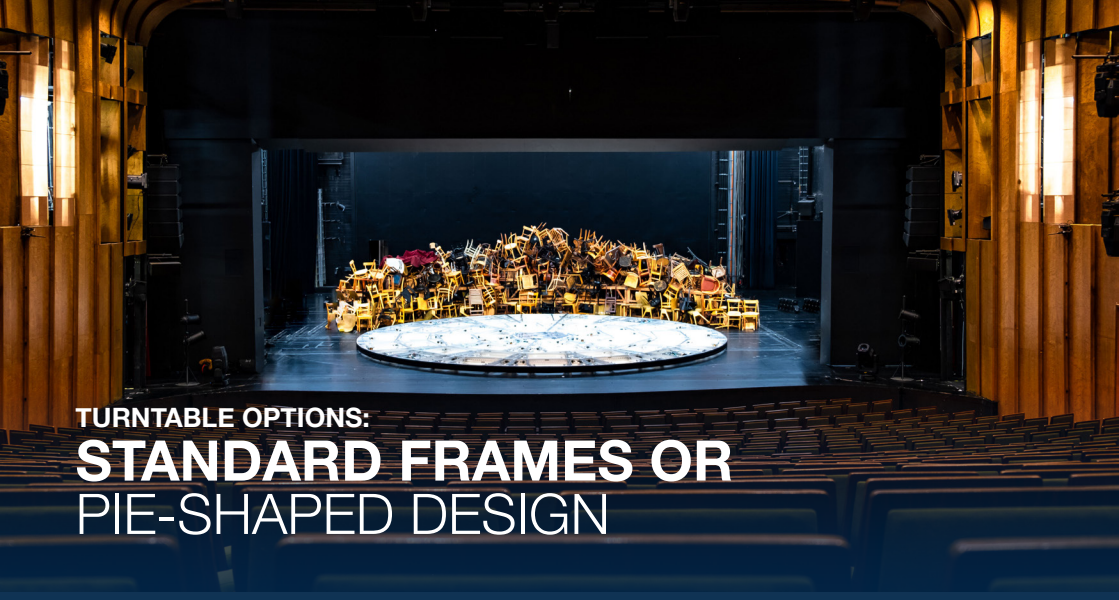


A turntable gives every performance more momentum and dynamism and inspires your audience. In addition to this artistic enrichment, our mobile turntables also offer a number of practical advantages: they can be

used flexibly and are particularly quick and easy to set up, giving you valuable time for other tasks. We offer two types of turntables: Turntables with either the standard frame or in a pie-shaped design - each has its own unique benefits.

### TECHNICAL DATA:

- > Dynamic load: 250 kg/m<sup>2</sup>
- > Static load: 500 kg/m<sup>2</sup>
- > Battery or slip ring
- > Control manual/programmable
- > Installation height: 200 mm
- > Frame material: aluminum
- > Cover plate material: 21 mm multiplex
- > Diameter: 4 to 30 m
- > Wheel material: Vulkollan
- > Internal or external drive



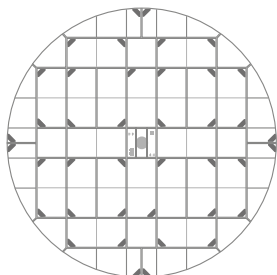
## **TURNTABLE OPTIONS:**

# **STANDARD FRAMES OR PIE-SHAPED DESIGN**

### **STANDARD FRAMES (INDIVIDUAL)**

If existing standard frames are used, a ring of curved outer frames is built to create the turntable.

- > Re-usable standard frames, saving on purchasing costs.
- > Minimal storage space required.
- > Suitable for battery operation.

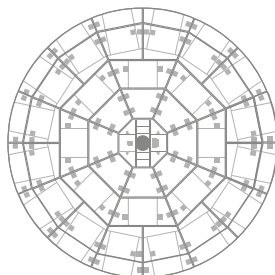


*Illustration:  
Standard frame construction form*

### **PIE-SHAPED (STANDARD)**

The pie-shaped sections are divided into multiple rings. Using the circular approach, the turntable can be extended in any number of ways.

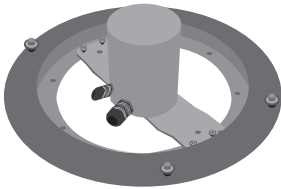
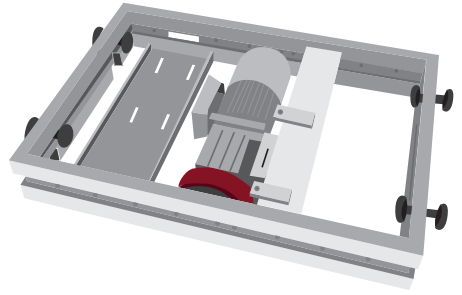
- > Turntable sizes can be easily expanded as needed.
- > The rings can be individually controlled in different directions of motion.
- > Exceptionally smooth operating properties.
- > Heavy loads can be achieved.



*Illustration:  
Pie-shaped construction form*

## MOTORS AND DRIVES

Our Standard provides you with flexibility: design, speed and height can be individually customised. It is also possible to install a Servo IIA in the standard frame design, which is capable of moving loads of up to 3 tonnes.

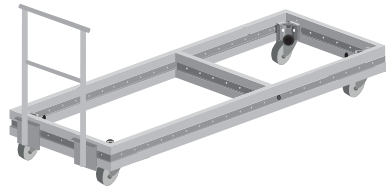


## SLIP RING

The pie-shaped design, it not only ensures the motion of the turntable, but also enables the transmission of DMX, audio and other data via fiber optics.

## STORAGE WAGON

Any straight frame can be quickly converted into a storage cart: Simply insert the leg holder, attach the wheels and add a railing if required - and the storage cart is all set.



## CONVERSION

If no conversion is implemented, the turntable is elevated on the stage. We therefore recommend a conversion that provides a leveled surface. In keeping with our HOAC principle, it is quick and easily to set up.



# THEATRO DE SOHO

MALAGA, SPAIN

For the production of Antonio Bandera's show 'Company', we built a special turntable with several rings in collaboration with our partner Pascualin. Each of the rings can be rotated in different directions independently of the others. Four motors power the outer ring and two motors each power the centre ring and the platform in the heart. These freely programmable rides are operated with a Unican control unit.

